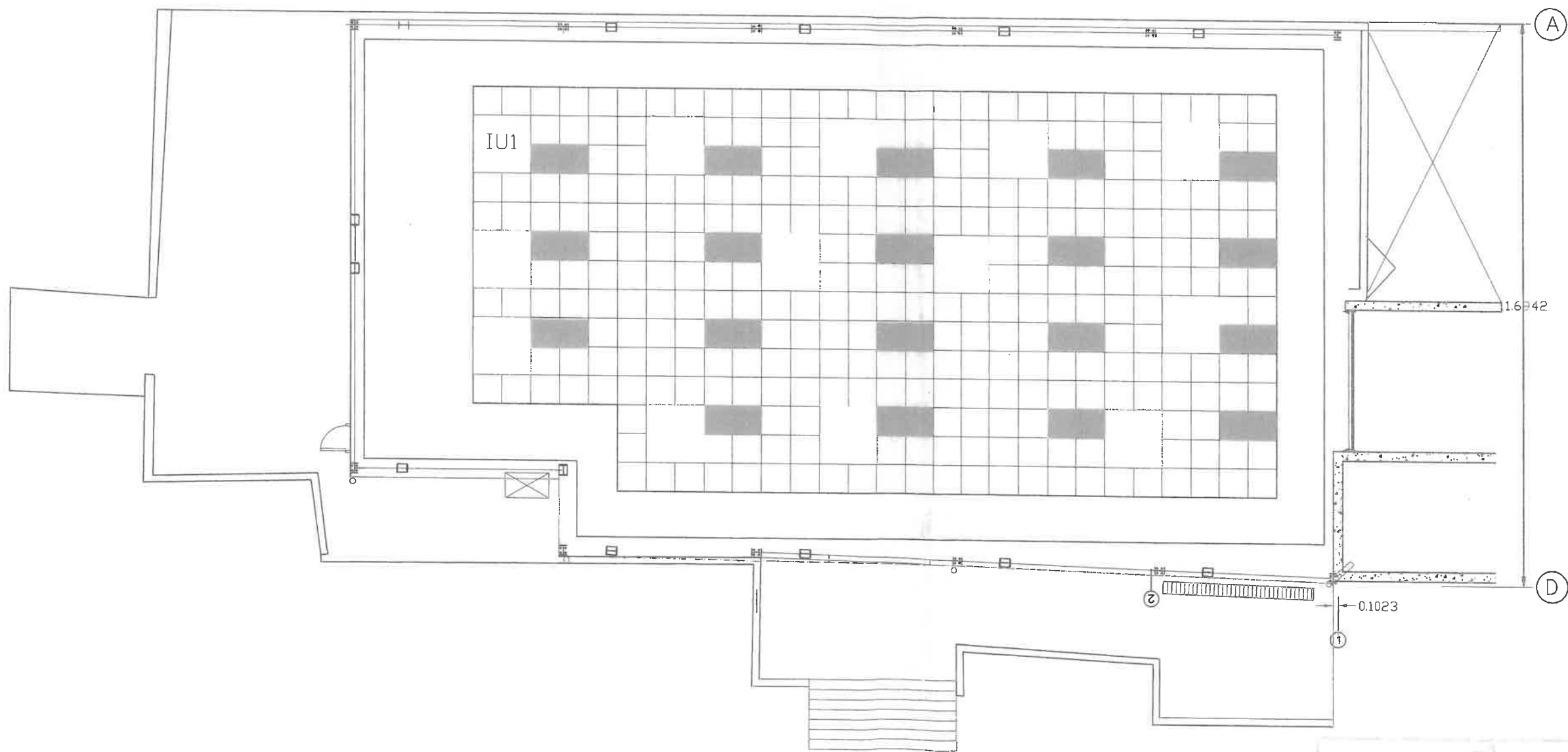


GJU /SABE  
GLASS BOX



GJU/SABE

SABE Glass Box

Project Number

Date

Drawn by

Checked by

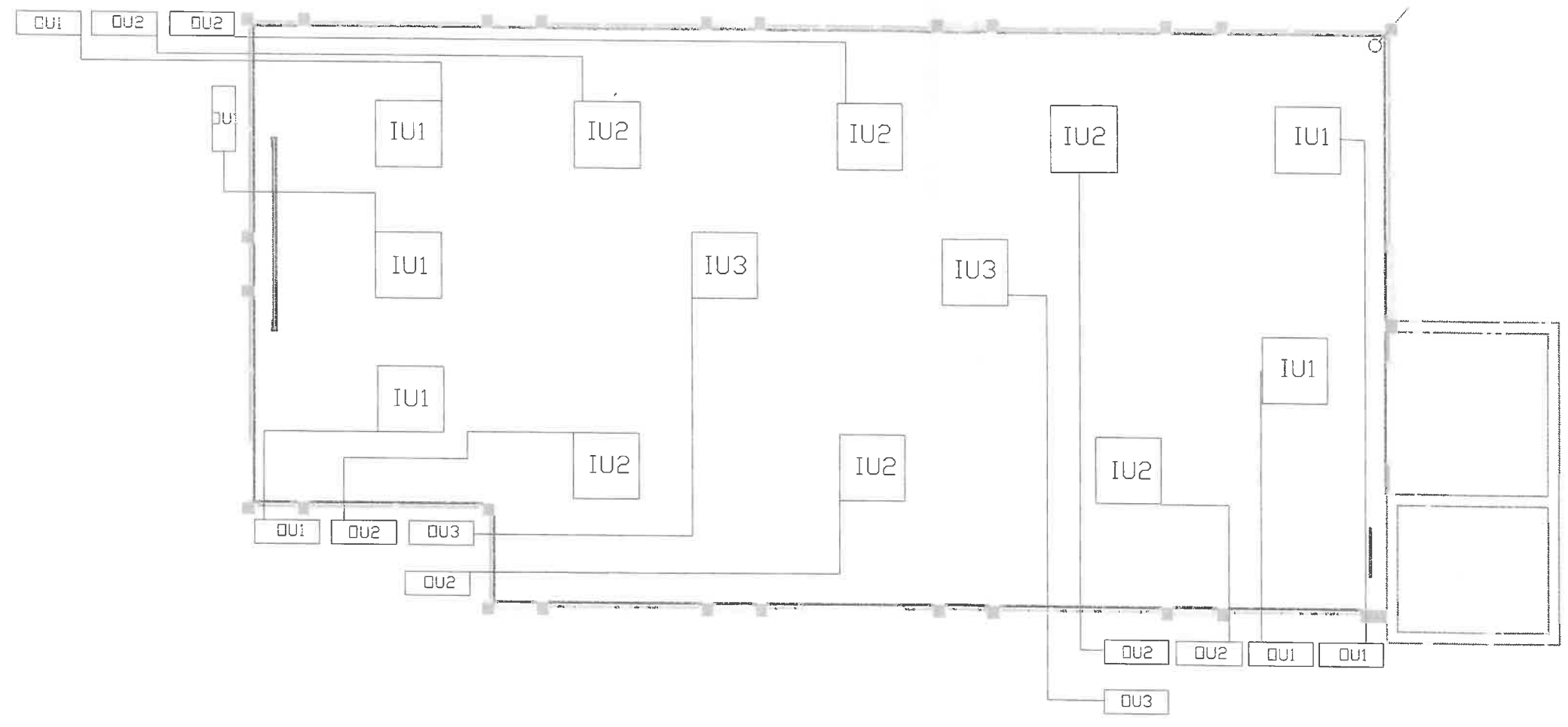
Ceiling

Scale

Handwritten notes and stamps in Arabic script, including a circular official stamp.

GJU /SABE  
GLASS BOX

Existing Drain



AC	QTY	IU	OU
1	5	AC071MN4DKH	AC071MXADKH
2	6	AC100MN4DKH	AC100MAXADKH
3	2	AC140MN4DKH	AC140MAXADKH

GJU/SABE

SABE Glass Box

Project Number

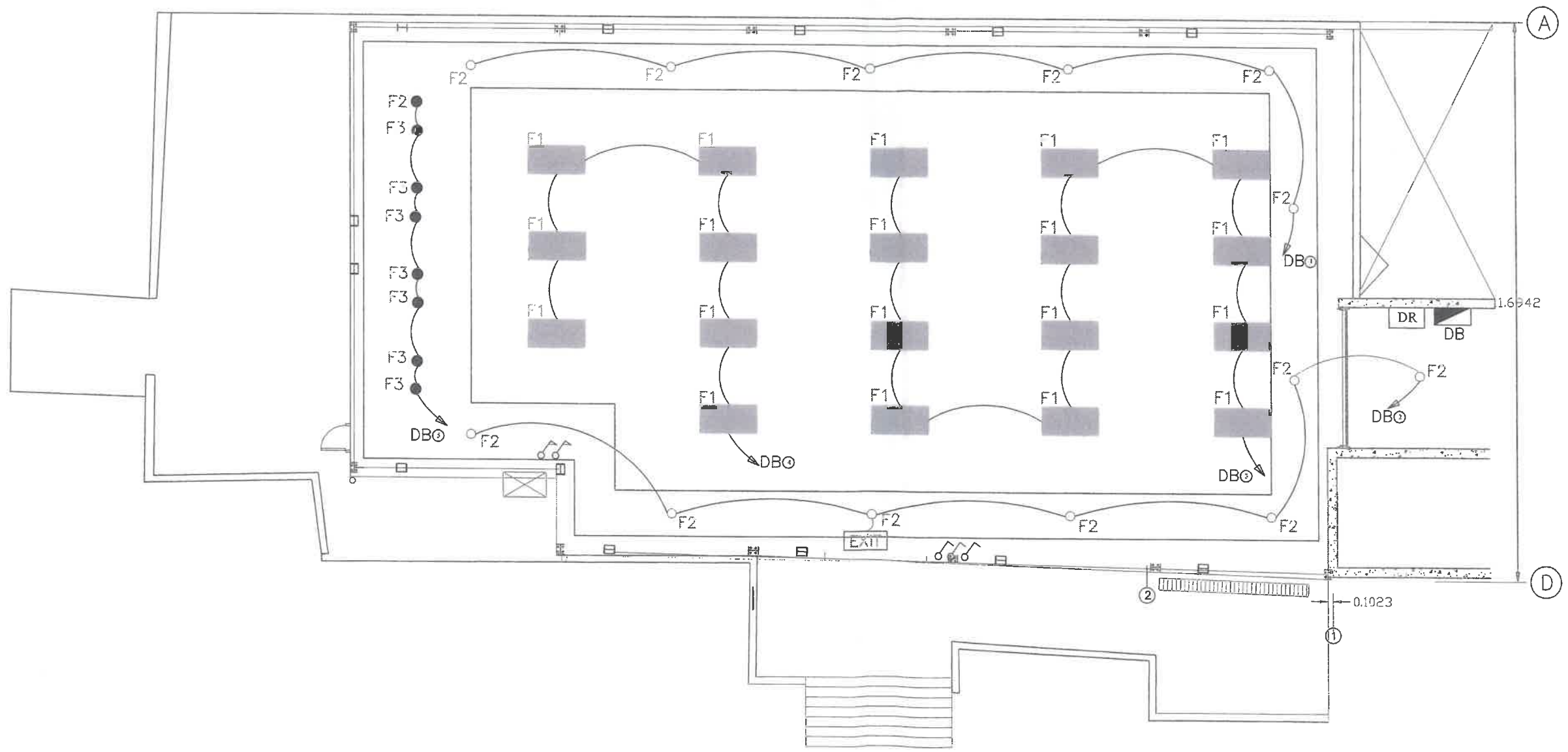
Date

Drawn by

Checked by

AC Units Location Plan

GJU /SABE  
GLASS BOX



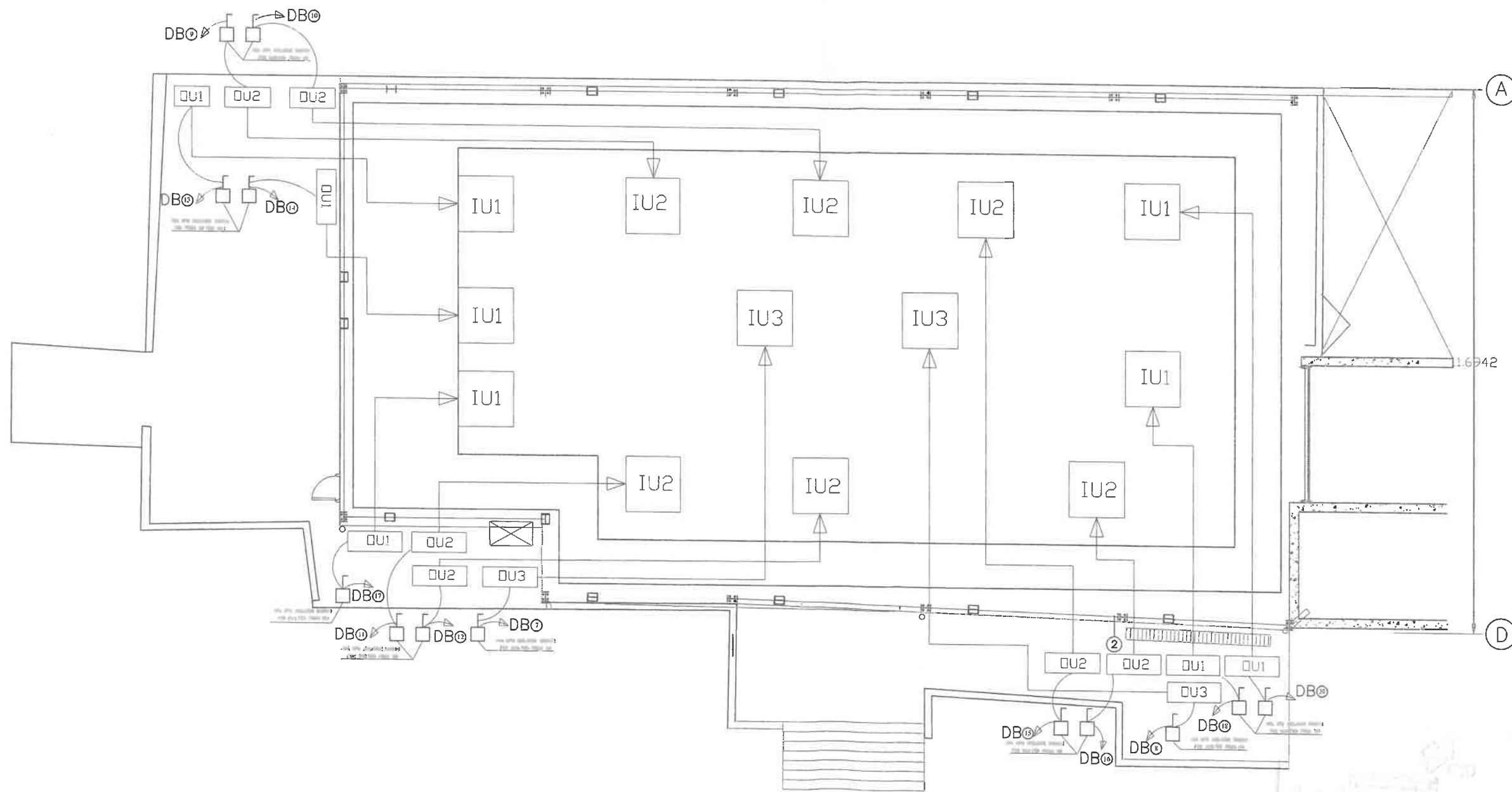
GJU/SABE

SABE Glass Box

Project Number  
Date  
Drawn by  
Checked by



GJU /SABE  
GLASS BOX



GJU/SABE

SABE Glass Box

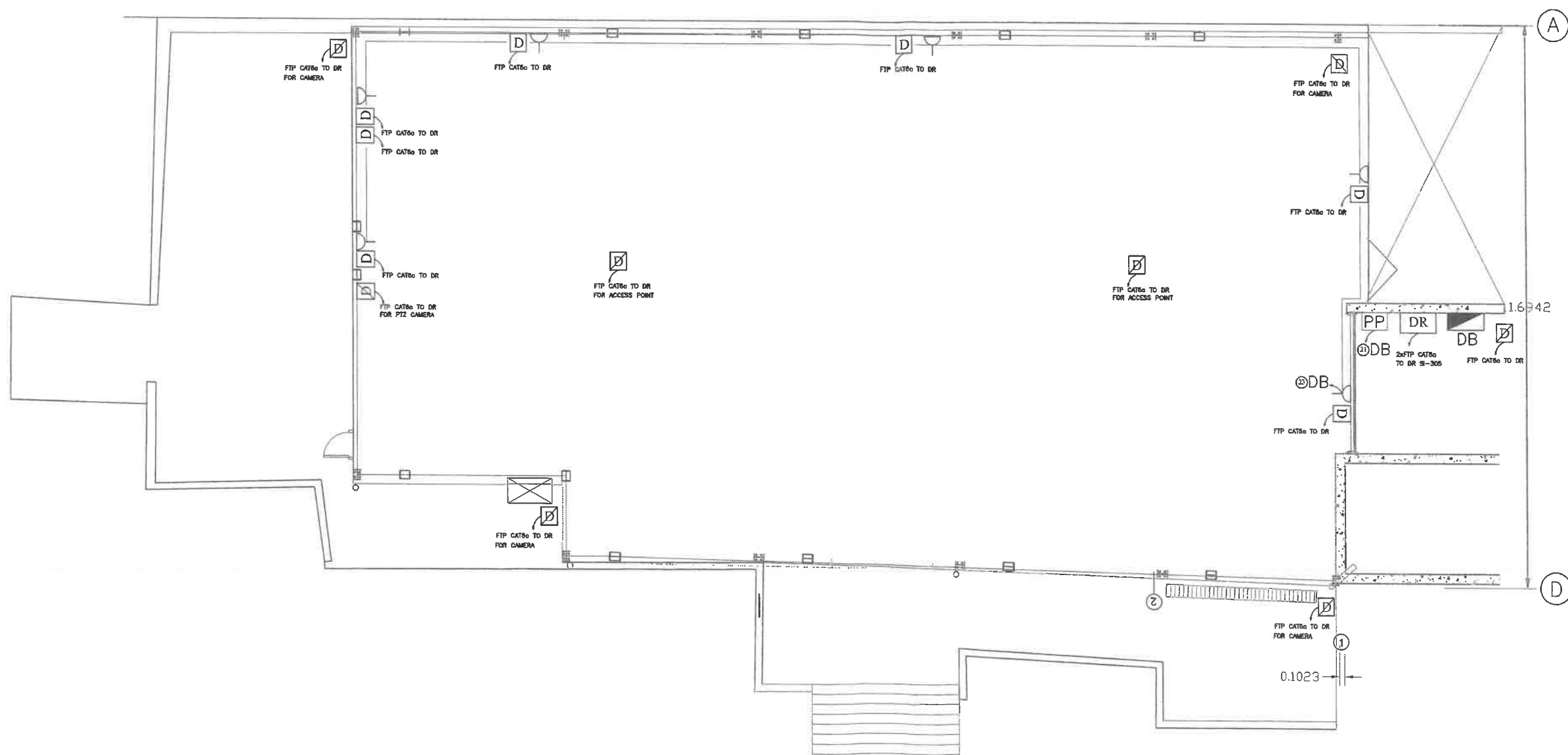
Project Number

Date

Drawn by

Checked by

GJU /SABE  
GLASS BOX



GJU/SABE

SABE Glass Box




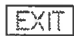
Project Number

Date






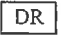
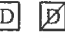
Drawn by

Checked by

Handwritten notes and signatures in Arabic script, including a signature and a date.

SYMBOL	FIX. REF.	VOLTS	WATTS	DESCRIPTION	MOUNTING TYPE
	F1	230	87W 7350 Lm 4000K	LED RECESSED MODULAR LIGHTING FIXTURES WITH A VERY SLENDER DESIGN AND HIGH-EFFICIENCY 4000K LED SOURCES. HOUSING: GALVANIZED STEEL SHEET, AND FRAME IN ALUMINUM. DIFFUSER: IN PRISMATIC PLASTIC WITH HIGH THERMAL TRANSMITTANCE. DIMMING STANDARD VERSION, UGR<19, LOW FLICKER, POWER FACTOR>0.95 LED: MAINTENANCE 50.000h, IP 20.	RECESSED (80X120)
	F2	230	19W 2315 Lm 4000K	HOUSING: DIE CAST ALUMINUM COMPLETE WITH SPRING CLIPS FOR RECESSED MOUNTING. DIFFUSER: HIGH TEMPERATURE RESISTANT THERMO-PLASTIC MATERIAL. COATING: POWER-COATED WITH A UV-RESISTANT POLYESTER EPOXY PAINT, UGR<19, LOW FLICKER, POWER FACTOR>0.95, CRI 95 LED: MAINTENANCE 50.000h, IP 20.	RECESSED (Ø245)
	F3	230	11W 1270 Lm 4000K	HOUSING: DIE CAST ALUMINUM COMPLETE WITH SPRING CLIPS FOR RECESSED MOUNTING. DIFFUSER: HIGH TEMPERATURE RESISTANT THERMO-PLASTIC MATERIAL. COATING: POWER-COATED WITH A UV-RESISTANT POLYESTER EPOXY PAINT, UGR<19, LOW FLICKER, POWER FACTOR>0.95, CRI 95 LED: MAINTENANCE 50.000h, IP 20. DIMMING STANDARD VERSION	RECESSED (Ø180)
		230	8W	HOUSING: IN PLASTIC MATERIAL, REFLECTOR: IN TRANSPARENT PLEXIGLASS. EQUIPMENT: SUPPLIED WITH ACCESSORIES FOR WALL, CEILING INSTALLATION. VERSION: EMERGENCY RUN TIME 60 MINUTES, WHEN POWER IS RESTORED, THE BATTERY RECHARGES AUTOMATICALLY. LED: POWER FACTOR >0.92, MAINTENANCE 50.000h.	WALL, CEILING MOUNTED

GJU /SABE  
GLASS BOX

	10 AMP. ONE GANG ONE-WAY SWITCH
	1-GANG 2-WAY LED DIMMER SWITCH, WHITE, RAISED SLIM PROFILE, SCREWED FACEPLATE.
	13 AMP. SWITCH SINGLE (DUPLEX) PHASE SOCKET OUTLET .
	SINGLE PHASE DISCONNECTING SWITCH
 DB	DISTRIBUTION BOARD
 DR	DATA CABENET
 D	DATA OUTLET/ COMPUTERS, DATA OUTLET/ COMPUTERS ABOVE F.C

GJU/SABE

SABE Glass Box

Project Number

Date

Drawn by

Checked by

GJU /SABE  
GLASS BOX

PANEL NAME : DB																								
MOUNTED : SURFACE MOUNTED																								
400V 3 PHASE 4W & G 4X50 + 1X25 CU/XLPE/PVC CABLE																								
TPN DB IP41 : 5 WAY																								
LOCATION : GLASS BOX 3																								
Size of Cond. (mm)	Size of Wire (mm <sup>2</sup> )	CT No.	Description	Phase (R) (W)	Phase (Y) (W)	Phase (B) (W)	PH	AMP Trip	AMP Frame	BR No.	R	Y	B	BR No.	AMP Frame	AMP Trip	PH	Phase (R) (W)	Phase (Y) (W)	Phase (B) (W)	Description	CT No.	Size of Wire (mm <sup>2</sup> )	Size of Cond. (mm)
20	2X2.5+2.5	1	LGT	115			R1	10	100	1	X			2	100	10	R2	115			LGT	2	2X2.5+2.5	20
20	2X2.5+2.5	3	LGT		604		Y1	10	100	3		X		4	100	10	Y2		470		LGT	4	2X2.5+2.5	20
20	2X2.5+2.5	5	LGT			88	B1	10	100	5			X	6	100	10	B2			0	SPARE	6		20
20	2x6+6	7	AC	7000			R3	32	100	7	X			8	100	32	R4	7000			AC	8	2x6+6	20
20	2x6+6	9	AC		5300		Y3	25	100	9		X		10	100	25	Y4		5300		AC	10	2x6+6	20
20	2x6+6	11	AC			5300	B3	25	100	11			X	12	100	25	B4			5300	AC	12	2x6+6	20
20	2x4+4	13	AC	4400			R5	25	100	13	X			14	100	25	R6	4400			AC	14	2x4+4	20
20	2x6+6	15	AC		5300		Y5	25	100	15		X		16	100	25	Y6		5300		AC	16	2x6+6	20
20	2x4+4	17	AC			4400	B5	25	100	17			X	18	100	25	B6			4400	AC	18	2x4+4	20
20	2x4+4	19	SKT	0			R7	10	100	19	X			20	100	10	R8	4400			AC	20	2x4+4	20
20	2x4+4	21	SKT PP		2500		Y7	16	100	21		X		22	100	16	Y8		0		SPARE	22		20
20	2x4+4	23	SKT			1600	B7	16	100	23			X	24	100	16	B8			0	SPARE	24		20
connected load (W)				11515	11404	11288					R	Y	B					15915	11070	9700	connected load (W)			
TCL (KW)				34207			<b>MAIN BREAKER</b>							36685			TCL (KW)							
TOTAL CONNECTED LOAD =				70.89 KW			120 A, 3P, MCCB							Total connected load "R"			27430 W							
DEMAND FACTOR				0.80 FOR LIGHTING AND POWER CIRCUITS										Total connected load "Y"			22474 W							
TOTAL DEMAND LOAD =				56.71 KW										Total connected load "B"			20958 W							
DEMAND CURRENT				104.24 A																				
CONNECTED CURRENT				115.82 A																				

GJU/SABE

SABE Glass Box

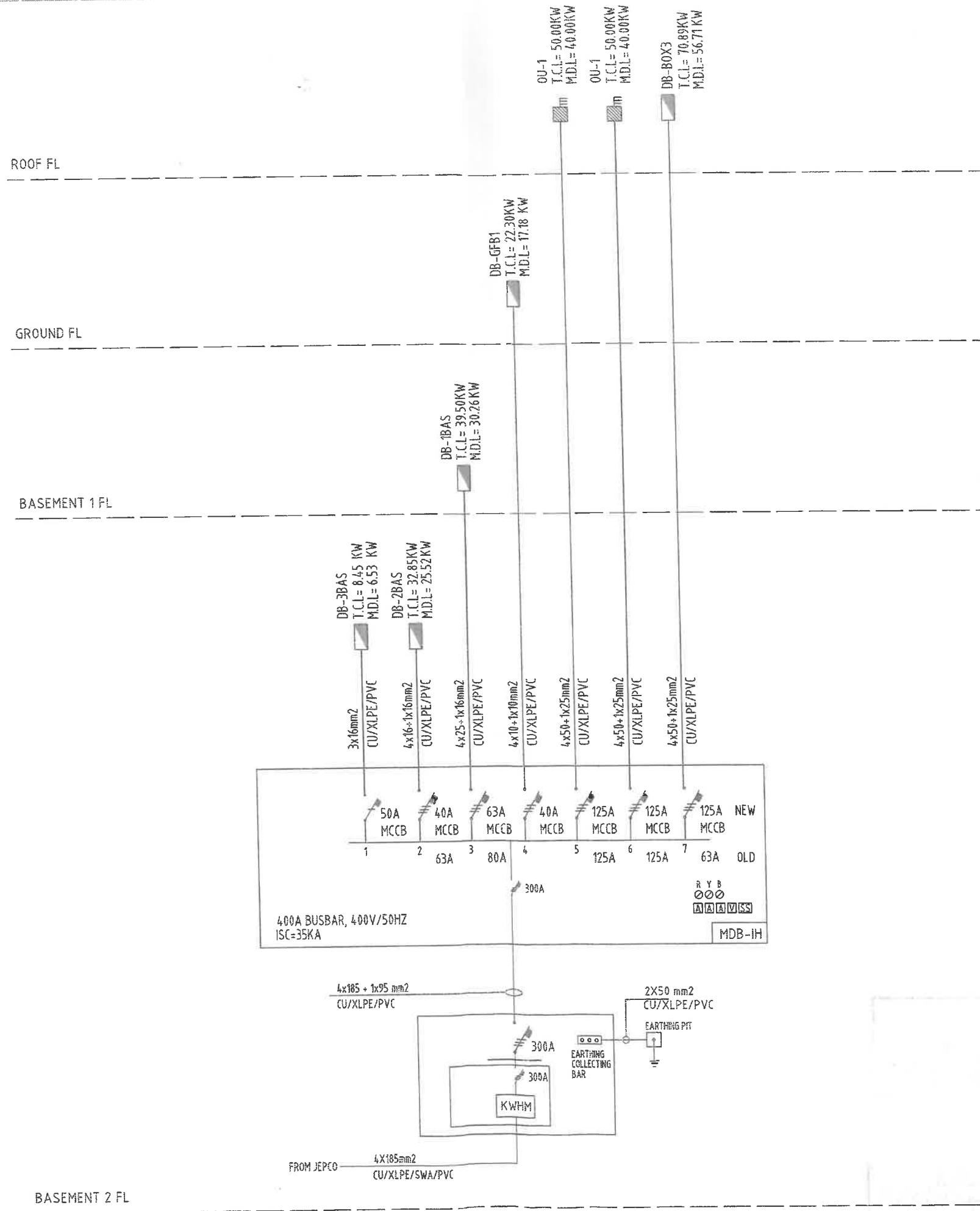
Project Number

Date

Drawn by

Checked by

Handwritten signature and stamp in the bottom right area of the page.



GJU /SABE  
GLASS BOX

GJU/SABE

SABE Glass Box

Project Number

Date

Drawn by

Checked by